



Company Info

Display leader Advertising Equipment Co., Ltd. is a professional manufacturer of display equipments, located in Changzhou city of Jiangsu Province. Our factory covers an area of 3000 square meters, and have complete manufacturing facilities and skilled workers. From raw material to finished products, every procedure has strictly quality control and inspection by us.

Our products are featured in portable, easy set-up, economical, and with good show effects. They are suitable for any kinds of sales promotions and exhibitions. We dedicate to provide top quality, good price and professional service to our customers. We are sincerely looking for business partners worldwide. You are warmly welcome to visit our factory for the business cooperation.

Product Range:

Our products include different material flooring sample, such as WPC flooring sample, SPC flooring sample, bamboo flooring sample, hardwood flooring sample and laminate flooring sample. So does the flooring display rack etc.

Design ability:

We design the most innovative and unique display products for the market. We also has the service of OEM/ODM product experience for our professional customers in Europe and America.

Printing Solution:

We can supply you indoor inkjet printing, eco-solvent inkjet printing and dye sublimation inkjet printing. Digital printing and dye-sublimation printing is included. One-stop printing solution demand can be supplied.

Product Quality:

We always persist in top quality with competitive price for our customers on the market. We have strict quality control from raw material to workmanship.

Business Concepts:

Supply excellent product and service for our customers. Realizing win-win development.

Company Spirit:

Integrity, Creativity, Sharing.





Model NO. T9137

Size W:D:H 425*805*1885 (mm)
 × Weight 14.8 (KG)

Sample Boards

PCS: 10
 W:L 450*400 (mm)

Package

PCS: 1
 Box 1: 1900*550*15 (mm)

Model NO. T9112

Size W:D:H 530*462*1905mm)
 × Weight 16.5 (KG)

Sample Boards

PCS: 12
 W:L 450*450 (mm)

Package

PCS: 1
 Bo x 1: 2250*500*120 (mm)



Model NO. M9307

Size W:D:H 1491*525*2100 (mm)
 × Weight 39.5 (KG)

Sample Boards

PCS: 30
 W:L 457*457 (mm)

Package

PCS: 2
 Bo x 1: 2120*480*15 (mm)
 2120*480*15 (mm)



Model NO. T9105

Size W:D:H 515*462*1905mm
 × Weight 16.5 (KG)

Sample Boards

PCS: 12
 W:L 450*450 (mm)

Package

PCS: 1
 Bo x 1: 2000*500*120 (mm)



Model NO. SD9141

Size W:D:H 655*425*1990 (mm)
 × Weight 16.5 (KG)

Sample Boards

PCS: 14
 W:L 600*400 (mm)

Package

PCS: 1
 Bo x 1: 2200*610*120 (mm)

Model NO. T9118

Size W:D:H 1091*527*1988 (mm)
 × Weight 32.6 (KG)

Sample Boards

PCS: 24
 W:L 500*400 (mm)

Package

PCS: 1
 Bo x 1: 2110*590*230 (mm)



Model NO.

Size W:D:H 920*580*2200mm
 × Weight 45kg

Sample Boards

PCS: 14
 W:L 1700*400mm

Package

PCS:
 Bo x 1:



Model NO. T9151

Size W:D:H 563*418*1832 (mm)
 × Weight 20.3 (KG)

Sample Boards

PCS: 12
 W:L (195--230)*1200 (mm)

Package

PCS: 2
 Bo x 1: 450*425*75 (mm)
 Bo x 2: 1660*730*70 (mm)



Model NO. SD9156

Size	W:D:H	1300*600*2200 (mm)
×	Weight	32 (KG)

Sample Boards

PCS:	40
W:L	400*600 (mm)

Package

PCS:	1
Bo x 1:	2250*605*25 (mm)

Model NO. T9300

Size	W:D:H	796*558*1977 (mm)
×	Weight	52 (KG)

Sample Boards

PCS:	12
W:L	610*305 (mm)

Package

PCS:	3
Bo x 1:	960*660*320 (mm)
Bo x 2:	930*565*180 (mm)
Bo x 3:	1840*840*110 (mm)



Model NO. MT91602

Size W:D:H 499*556*2060 (mm)
 × Weight 26 (KG)

Sample Boards

PCS: 12
 W:L 457*400 (mm)

Package

PCS: 1
 Box1: 2080*540*120 (mm)



Model NO. MT91603

Size W:D:H 496*420*2000 (mm)
 × Weight 18.7 (KG)

Sample Boards

PCS: 8
 W:L 457*457 (mm)

Package

PCS: 1
 Bo x 1: 2150*525*80 (mm)



Model NO. T9308

Size W:D:H 1610*680*1875 (mm)
 × Weight 158 (KG)

Sample Boards

PCS: 48
 W:L 450*600 (mm)

Package

PCS: 3
 Bo x 1: 1650*760*105 (mm)
 Bo x 2: 1640*620*80 (mm)
 Bo x 3: 1210*310*65 (mm)

Model NO. T9309

Size W:D:H 2537*835*2016 (mm)
 × Weight 210.5 (KG)

Sample Boards

PCS: 60
 W:L 600*536 (mm)

Package

PCS: 2
 Bo x 1: 1795*860*335 (mm)
 1785*770*110 (mm)



Model NO. M9133

Size W:D:H 700*610*1315 (mm)
 × Weight 7 (KG)

Sample Boards

PCS: 8
 W:L ≥400 (mm)

Package

PCS: 1
 Bo x 1: 800*600*6 (mm)



Model NO. M9164

Size W:D:H 709*464*1780 (mm)
 × Weight 25 (KG)

Sample Boards

PCS: 7
 W:L 605*710 (mm)

Package

PCS: 1
 Bo x 1: 1570*680*195 (mm)



Model NO. M9306

Size W:D:H 1100*250*600 (mm)
 × Weight 11.2 (KG)

Sample Boards

PCS: 50
 W:L ≥120 (mm)

Package

PCS: 1
 Bo x 1: 280*1120*12 (mm)

Model NO. M9154

Size W:D:H 510*510*2100 (mm)
 × Weight 18.7 (KG)

Sample Boards

PCS: 8
 W:L 457*457 (mm)

Package

PCS: 1
 Bo x 1: 915*420*52 (mm)





Model NO. M9603

Size W:D:H 499*556*2060 (mm)
 X Weight 26(KG)

Sample Boards

PCS: 12
 W:L 457*400 (mm)

Package

PCS: 1
 Bo x 1: 1870*540*70(mm)

Model NO. M9109

Size W:D:H 360*940*1260 (mm)
 X Weight 19 (KG)

Sample Boards

PCS: 14
 W:L 600*800 (mm)

Package

PCS: 1
 Bo x 1: 1260*400*90 (mm)



Model NO. MT916024

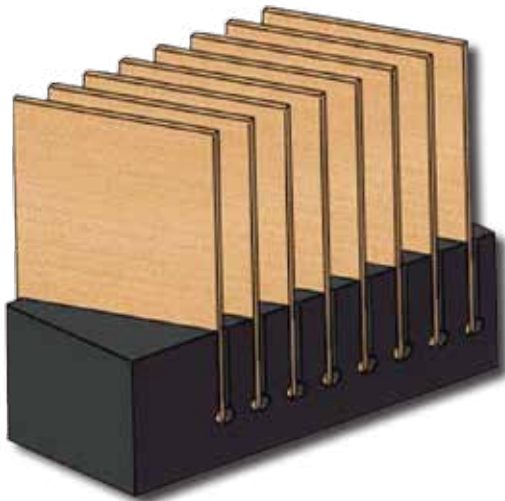
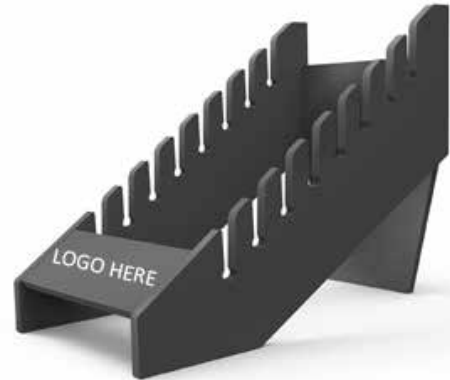
Size W:D:H 520*910*500 (mm)
 × Weight 17 (KG)

Sample Boards

PCS: 8
 W:L 600*800 (mm)

Package

PCS: 1
 Bo x 1: 900*500*100 (mm)



Model NO. M9149

Size W:D:H 420*1100*450 (mm)
 × Weight 23 (KG)

Sample Boards

PCS: 8
 W:L 500*700 (mm)

Package

PCS: 1
 Bo x 1: 1100*420*120 (mm)



Model NO. T9110

Size W:D:H 540*455*1680 (mm)
 × Weight (KG)

Sample Boards

PCS: 10
 W:L 400*600 (mm)

Package

Bo x 1:

Model NO. T9159

Size W:D:H 605*905*1575 (mm)
 × Weight (KG)

Sample Boards

PCS: 10
 W:L 600*800 (mm)
 600*1200 (mm)

Package

Bo x 1:



Model NO. M9109

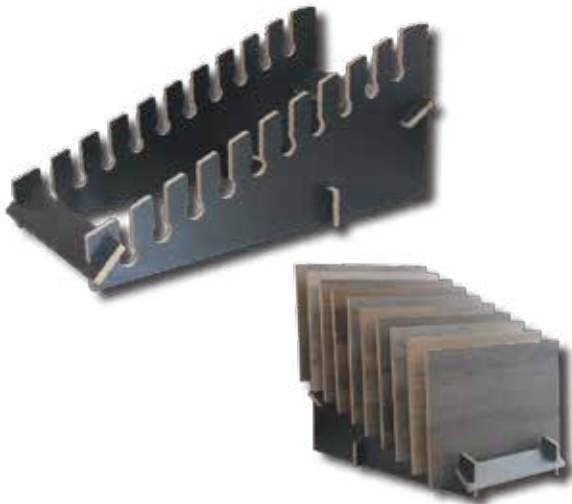
Size W:D:H 440*850*2120 (mm)
 × Weight (KG)

Sample Boards

PCS: 15
 W:L 530*735 (mm)

Package

PCS:
 Bo x 1:



Model NO. M9158

Size W:D:H 450*810*380 (mm)
 × Weight (KG)

Sample Boards

PCS: 10
 W:L 400*600 (mm)


Package

PCS:
 Bo x 1:

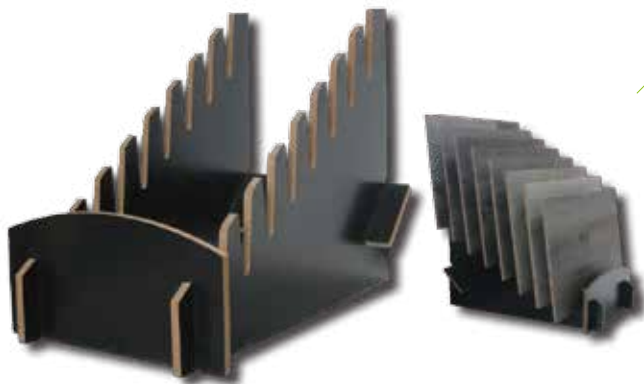
Model NO. M9107

Size	W:D:H	530*870*650 (mm)
×	Weight	(KG)

Sample Boards

	PCS:	12
	W:L	450*600 (mm) 600*700 (mm) 600*800 (mm) 600*900 (mm)
	Package	


	PCS:	
	Bo x 1:	




Model NO. M9111

Size	W:D:H	380*750*560 (mm)
×	Weight	(KG)

Sample Boards

	PCS:	8
	W:L	750*560*45 (mm)

Package

	PCS:	
	Bo x 1:	



Model NO. M9142

Size W:D:H 300*820*520 (mm)
 × Weight (KG)

Sample Boards

PCS: 10
 W:L 820*520*45 (mm)

Package

PCS:
 Bo x 1:

Model NO. M9154

Size W:D:H 395*595*1755 (mm)
 × Weight (KG)

Sample Boards

PCS: 8
 W:L 595*1050*55 (mm)

Package

PCS:
 Bo x 1:



Model NO. M9114

Size W:D:H 385*635*885 (mm)
 × Weight (KG)

Sample Boards

PCS: 8
 W:L 400*600 (mm)

Package

PCS:
 Bo x 1:



Model NO. M9157

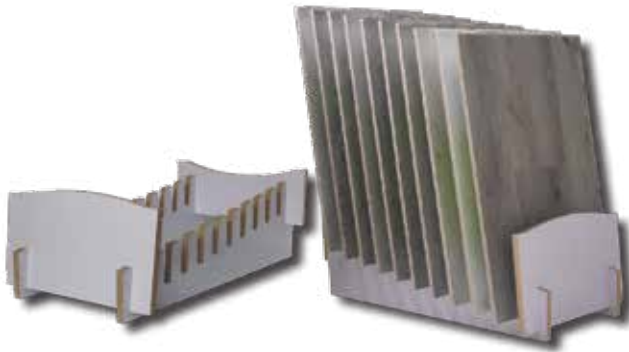
Size W:D:H 680*340*920 (mm)
 × Weight (KG)

Sample Boards

PCS: 6
 W:L 190*1220 (mm)

Package


PCS:
 Bo x 1:




Model NO. M9140

Size W:D:H 338*845*275 (mm)
 × Weight (KG)

Sample Boards


 PCS: 10
 W:L 845*275*45 (mm)

Package


 PCS:
 Bo x 1:


Model NO. M9115

Size W:D:H 480*780*385 (mm)
 × Weight (KG)

Sample Boards


 PCS: 9
 W:L 400*600 (mm)

Package


 PCS:
 Bo x 1:



Model NO. M9116

Size W:D:H 560*800*55 (mm)
 × Weight (KG)

Sample Boards

PCS: 6
 W:L 530*730 (mm)

Package

PCS:
 Bo x 1:



Model NO. M9111

Size W:D:H 380*750*560 (mm)
 × Weight (KG)

Sample Boards

PCS: 8
 W:L 750*560*45 (mm)

Package

PCS:
 Bo x 1:



Model NO. M9119

Size W:D:H 1420*1420*1500 (mm)
 × Weight (KG)

Sample Boards

PCS: 10
 W:L 580*1200 (mm)

Package

PCS:
 Bo x 1:

Model NO. M9154

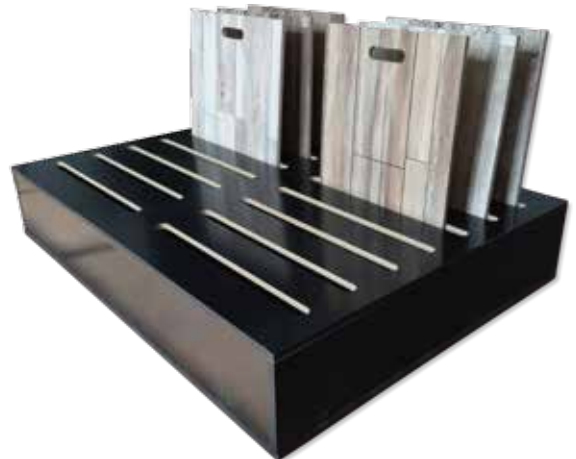
Size W:D:H 395*595*1755 (mm)
 × Weight (KG)

Sample Boards

PCS: 8
 W:L 595*1050*55 (mm)

Package

PCS:
 Bo x 1:



Model NO. M9114

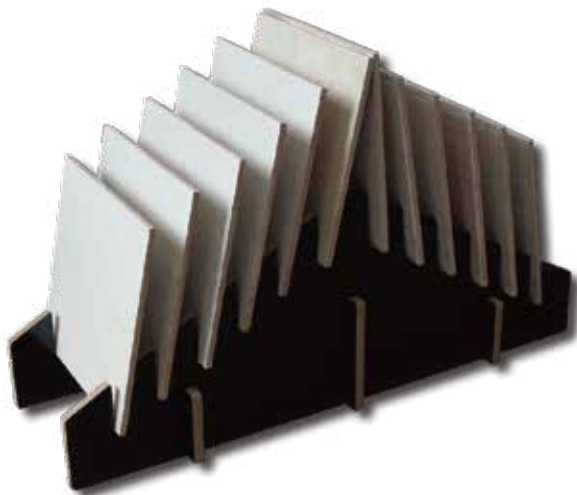
Size W:D:H 385*635*885 (mm)
 × Weight (KG)

Sample Boards

PCS: 8
 W:L 400*600 (mm)

Package

PCS:
 Bo x 1:



Model NO. M9157

Size W:D:H 680*340*920 (mm)
 × Weight (KG)

Sample Boards

PCS: 6
 W:L 190*1220 (mm)

Package

PCS:
 Bo x 1:



Model NO. M9140

Size W:D:H 338*845*275 (mm)
 × Weight (KG)

Sample Boards

PCS: 10
 W:L 845*275*45 (mm)

Package

PCS:
 Bo x 1:

Model NO. M9115

Size W:D:H 480*780*385 (mm)
 × Weight (KG)

Sample Boards

PCS: 9
 W:L 400*600 (mm)

Package

PCS:
 Bo x 1:



Model NO. T9304

Size W:D:H 2000*650*2150mm
 × Weight (KG)

Sample Boards

PCS: 31
 W:L 600*600mm

Package

PCS:
 Bo x 1:



Model NO. T9149

Size W:D:H 1950*865*1350mm
 × Weight

Sample Boards

PCS: 24
 W:L $W \geq 650\text{mm}$ $H \leq 650\text{mm}$

Package

PCS:
 Bo x 1:



Model NO.

Size	W:D:H	1610*680*1875 (mm)
×	Weight	140 (KG)

Sample Boards

	PCS:	40
	W:L	500*600mm

Package

	PCS:	4
	Bo x 1:	580*1250*270 (mm)
		1650*760*105 (mm)
		1640*670*80 (mm)
		1210*310*65 (mm)

Model NO.

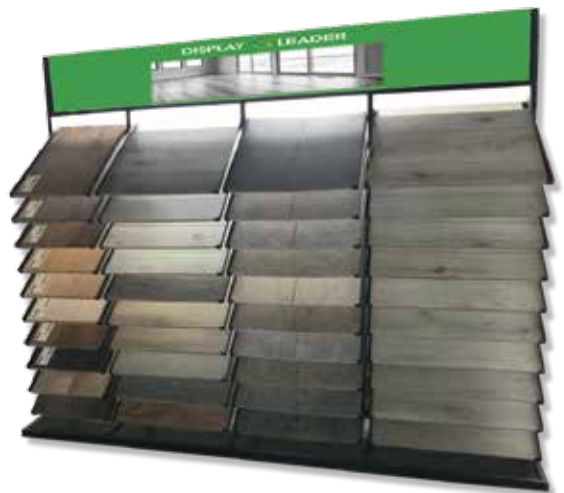
Size	W:D:H	2500*60*2120 (mm)
×	Weight	

Sample Boards

	PCS:	40
	W:L	440*610mm 600*600mm

Package

	PCS:	
	Bo x 1:	



Model NO. T9138

Size W:D:H 330*820*1870 (mm)
 × Weight

Sample Boards

PCS: 10
 W:L ONE PC FLOOR

Package

PCS:
 Bo x 1:



Model NO.

Size W:D:H 1120*695*2405 (mm)
 × Weight 85 (KG)

Sample Boards

PCS: 24
 W:L 570*380 (mm)

Package

PCS:
 Bo x 1:

Model NO.

Size W:D:H 100*680*1400mm
 X Weight 46kg

Sample Boards

PCS: 8
 W:L 560*800mm
 PCS:

Package



Bo x 1:



Model NO.

Size W:D:H 1200*580*2200mm
 X Weight 52kg

Sample Boards

PCS: 14
 W:L 1200*400mm
 PCS:

Package




PCS:
 Bo x 1:




Model NO.

Size	W:D:H	1120*690*1900 (mm)
×	Weight	(KG)

Sample Boards

	PCS:	20
	W:L	500*700 (mm)

Package

	PCS:	
	Bo x 1:	

Model NO.

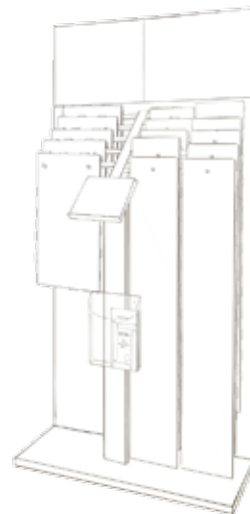
Size	W:D:H	(mm)
×	Weight	(KG)

Sample Boards

	PCS:	9
	W:L	400*600 (mm)

Package

	PCS:	
	Bo x 1:	





Model NO. S9211

Size
× 24" *24"

Lead Time
15-20 Days According to Quantity
MOQ
100pcs/color

 Pallet packing

Model NO. S9216

Size
× 10"

PVC COVER STRIP SET





Model NO. S9217

Size
X 22" *29"

Lead Time
15-20 Days According to Quantity
MOQ
100pcs/color

 Pallet packing

Model NO. S9214

Size
X 11"

PLASTIC COVER HAND BOARD





Model NO. S9213

Size
X 21" *30"

ROUND HAND BOARD

Model NO. S9207

Size
X 21" *30"

BANDING BOARD









